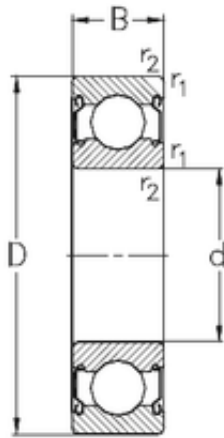




LYC BEARING CORP. OF German LTD.

65 mm x 100 mm x 18 mm NKE 6013-2Z deep groove ball bearings



Bearing No. 6013-2Z

| | |
|-------------------------------|--------------|
| Size | 65x100x18 mm |
| Bore Diameter | 65 mm |
| Outer Diameter | 100 mm |
| Width | 18 mm |
| d | 65 mm |
| D | 100 mm |
| B | 18 mm |
| C | 18 mm |
| r1 min. | 1,1 mm |
| r2 min. | 1,1 mm |
| Weight | 0,436 Kg |
| Basic dynamic load rating (C) | 30,5 kN |
| Basic static load rating (C0) | 25,2 kN |

6013-2Z Bearing 2D drawings and 3D CAD models